

Think pressing a button and getting automated financial reports and analyses from **Sage X3** is just a dream...

## We think it's just the start point with **A La Carte Financial Intelligence for Sage X3**

A La Carte Financial Intelligence allows your management team to simply focus on period end results and removes the burden of manually creating and maintaining spreadsheets to collate this information every period end. Working on any combination of **Sage X3** either hosted on premise or in the cloud, A La Carte automates reporting, ensures accuracy and offers the ability to audit your data back to underlying transactions in your accounting system.

	Actual	Budget	Variance	Variance %	Actual YTD	Budget YTD
<b>+ Sales</b>						
+ UK Sales	74,165.06	266,666.66	(192,501.60)	(72.19%)	1,577,216.92	1,599,999.92
+ Export Sales		1,416.66	(1,416.66)		401.94	2,833.32
<b>Total Sales</b>	<b>74,165.06</b>	<b>268,083.32</b>	<b>(193,918.26)</b>	<b>(72.34%)</b>	<b>1,577,618.86</b>	<b>1,602,833.24</b>
<b>+ Trading Expenses</b>						
+ Cost Of Sales	178,311.22	68,833.32	(109,477.90)	(159.05%)	1,164,268.78	412,999.92
+ Direct labour		4,333.32	4,333.32		5,973.26	25,999.92
+ Direct Selling		8,349.98	8,349.98		47,498.38	50,099.92
<b>Total Trading Expenses</b>	<b>178,311.22</b>	<b>81,516.62</b>	<b>(96,794.60)</b>	<b>(118.74%)</b>	<b>1,217,740.42</b>	<b>489,099.76</b>
<b>Gross Profit</b>	<b>(104,146.16)</b>	<b>186,566.70</b>	<b>(290,712.86)</b>	<b>(155.82%)</b>	<b>359,878.44</b>	<b>1,113,733.48</b>
<b>+ Non Trading Income</b>						
+ Non Trading Inc					3,787.74	1,250.00
+ Sale of Assets					600.00	
+ Other Income	78,856.12	(100,000.00)	178,856.12	178.86%	1,203.70	(600,000.00)
<b>Total Non Trading Income</b>	<b>78,856.12</b>	<b>(100,000.00)</b>	<b>178,856.12</b>	<b>178.86%</b>	<b>5,591.44</b>	<b>(598,750.00)</b>
<b>Profit before Overheads</b>	<b>(25,290.04)</b>	<b>86,566.70</b>	<b>(111,856.74)</b>	<b>(129.21%)</b>	<b>365,469.88</b>	<b>514,983.48</b>
<b>+ Overheads</b>						
+ Travel & Exp		400.00	400.00		1,796.18	2,400.00
+ Rent & Rates		2,050.00	2,050.00		11,920.84	23,700.00
+ Power					9,000.66	

Produce board quality Profit & Loss and Balance Sheet reports anyway you wish. Easily add additional P&Ls e.g Investor P&Ls, Statutory P&Ls and Divisional P&Ls with the A La Carte Statement Designer. Where non financial information e.g Headcount and KPIs e.g Profit per head, Cost per head etc are required, all can be added in minutes within the A La Carte software. Where a number on a report requires additional investigation, simply double click and you are taken to the underlying Sage transactions supporting it.

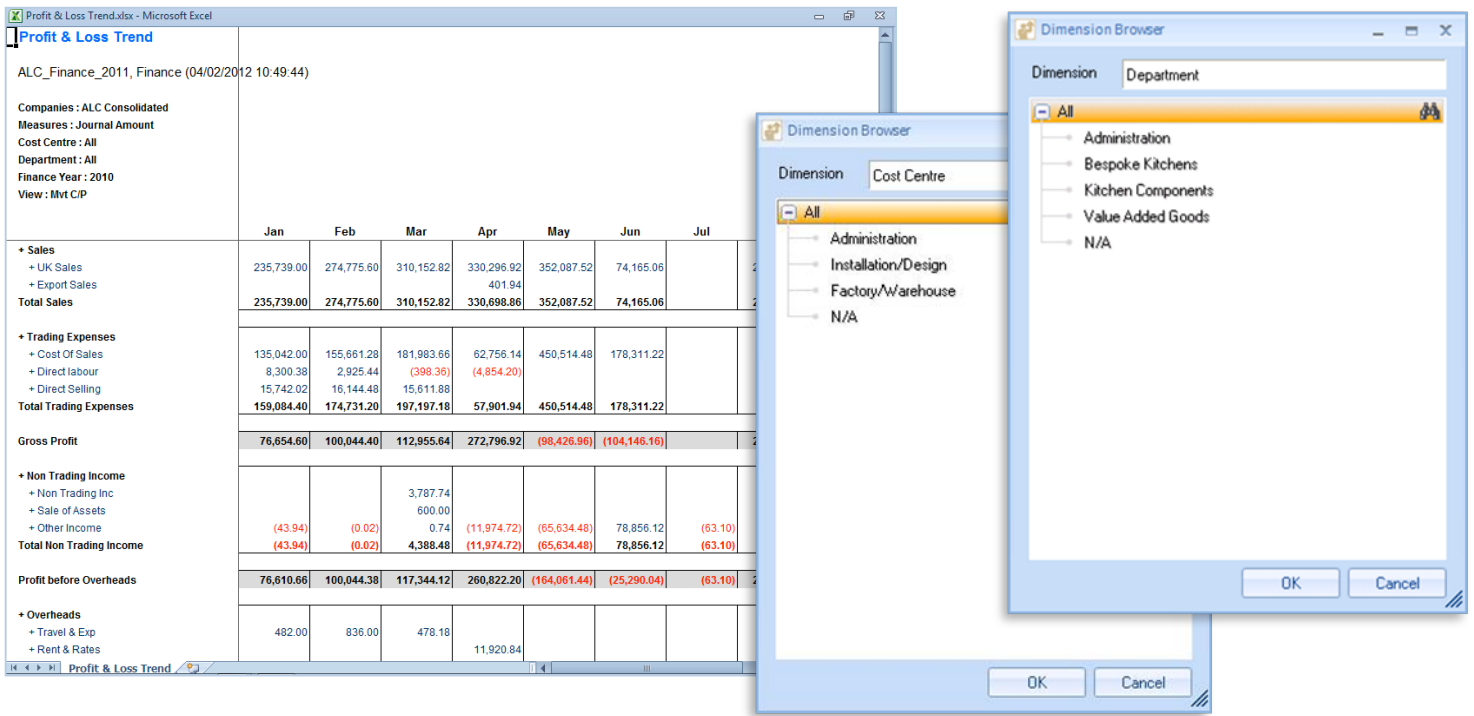
**All without leaving Excel !**



**A La Carte**  
Financial Intelligence

### Key Features

- Rapid implementation of Financial and Group Financial Consolidation applications.
- Low price entry and lowest total cost of ownership. Simple price per annum licensing
- Unlimited user deployment free of charge
- Software support and software product upgrades included as standard.
- Intuitive end user experience
- Excel based reports with exceptional print quality formatting.
- Modular implementation approach :
  - Financial Reporting
  - Transactional Reporting
  - Graphical Dashboards
  - Management Feedback
  - Forecasting
- Extendable to all your non Sage applications and other MI data
- On Premise, Cloud and Mobile



All financial reports can be dynamically changed and viewed by any combination of Company, Cost Centre and Department including up to 9 additional Analysis Fields along with multi currency analysis as required.

All reports are completely interactive within Excel with drilldown and precise formatting working in complete harmony.

However, it's not just about automating numbers within reports. Where professional charts and Dashboards are required to highlight over and under achieving areas of your business, A La Carte provides an integrated chart gallery with over 20 examples based on the data visualization guidelines advocated by industry visionaries such as Stephen Few and Edward Tufte.

To complete the picture, we provide 10 of the most popular P&L and Balance Sheet reports "out of the box" ensuring early ROI and rapid application adoption.



## So what are you waiting for?

Contact Burgan Consulting Limited ([www.burgan.co.uk/contact.php](http://www.burgan.co.uk/contact.php)) to arrange a web-based demonstration for you.

The whole thing will take about 1 hour and you don't even have to leave your office.

Management Reporting doesn't have to be a chore with A La Carte. Make it a competitive weapon in your business to improve bottom line whilst removing unnecessary costs. Guarantee data accuracy and provide reports 'out of the box' with print quality presentation for the very first time.

# BURGAN

Consulting

## Simon Burgan

Director | [simon@burgan.co.uk](mailto:simon@burgan.co.uk)

■ 01243 582095 ■ 07979 551101 ■ [www.burgan.co.uk](http://www.burgan.co.uk)  
 Burgan Consulting Limited, 'Wayside', 61 Chichester Road,  
 Bognor Regis, West Sussex, PO21 2AB